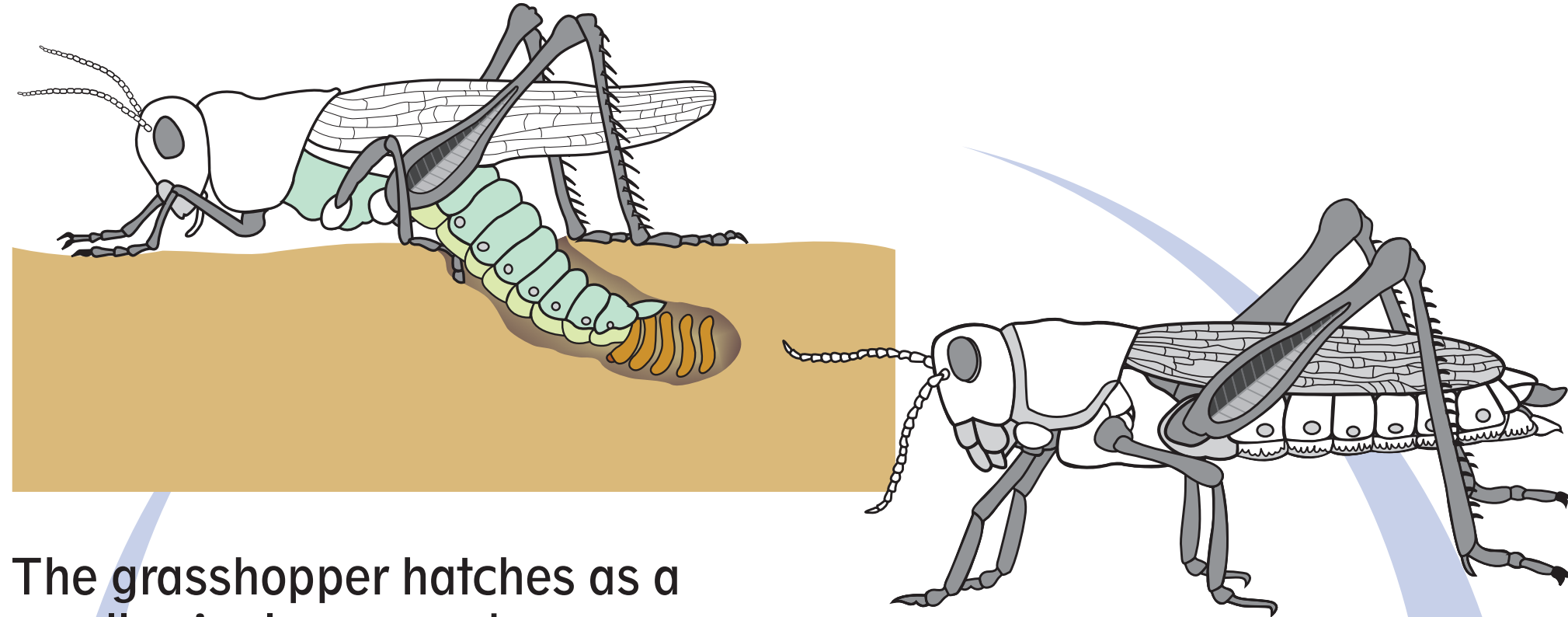


Life Cycle of Insects

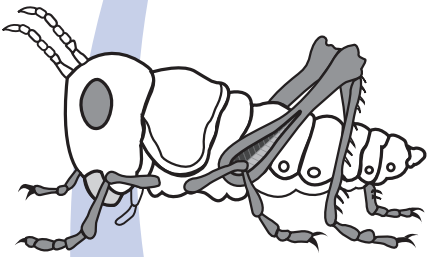
Development

Simple or Advanced

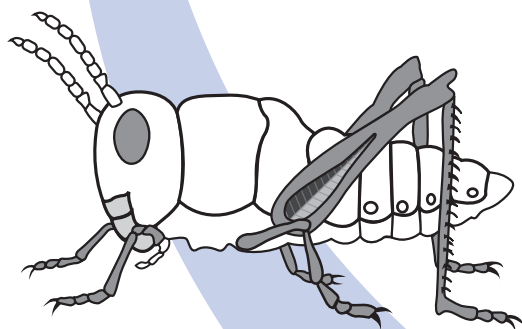
Female grasshopper lays eggs.



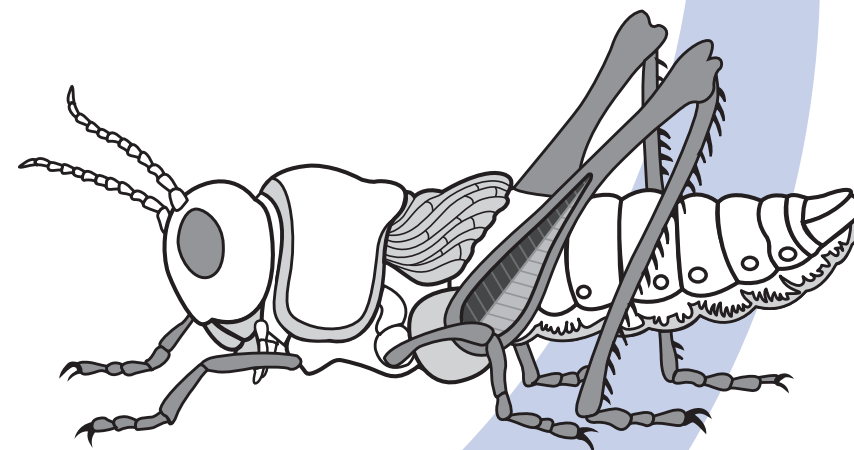
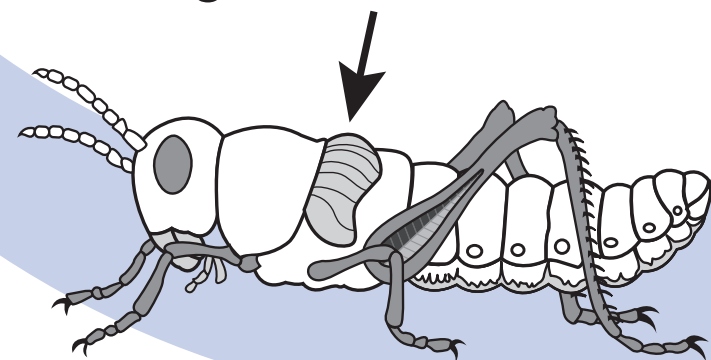
The grasshopper hatches as a small, wingless nymph.



Nymphs have to molt (shed their exoskeleton) to grow.



Wing pads begin to show where its wings will soon be.



Metamorphosis

Complete or Advanced

The female butterfly or moth lays her eggs on a plant.



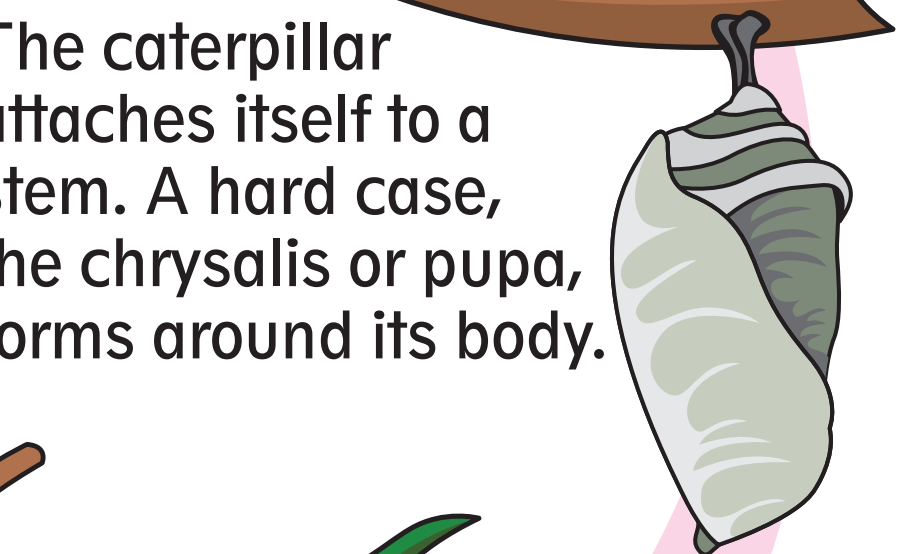
The larva or caterpillar hatches from the egg.



The caterpillar eats and eats...



The caterpillar attaches itself to a stem. A hard case, the chrysalis or pupa, forms around its body.



Inside the pupa the caterpillar turns into a butterfly or moth, crawls out, dries its wings, and flies away.

