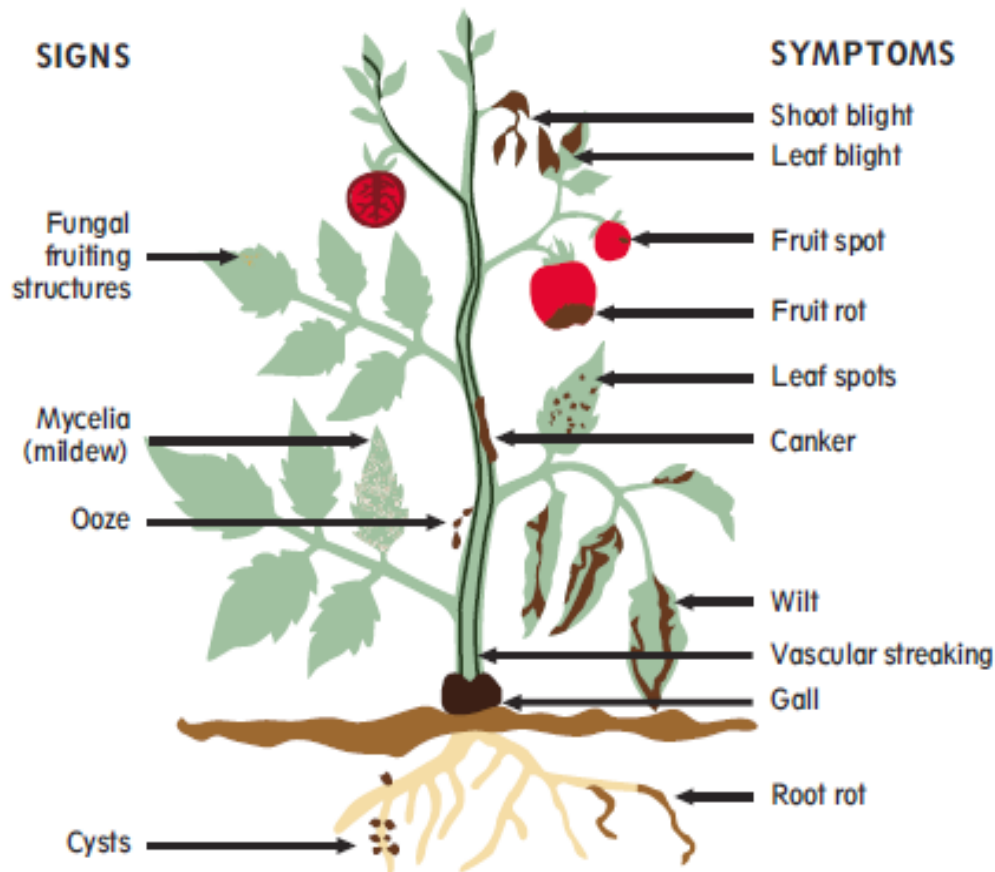


Plant Disease

The disturbance of the physiology, structure, or function of the plant.



Plant Diseases: Examples of signs and symptoms.

Symptoms are the changes in the plant produced by disease – usually the discolored, malformed or dying regions on plants.

Examples:

Necrotic or dead areas: Rots, Spots and Blights

Discoloration: Yellowing or Chlorosis

Gall overgrowth

Stunting or poor growth

Wilting